



Quality Products. Service Excellence.

Type 12 Mild Steel Pushbutton Enclosures *1437 Series*

Extra Deep



Application

- Designed to accept standard heavy duty oil tight pushbuttons, switches and pilot lights.
- Provides protection from dirt, dust, oil and water.

Standards

- UL 508A Type 12 and 13
- CSA Enclosure 12 and 13
- **Complies with**
 - NEMA Type 12 and 13
 - IEC 60529, IP54
 - JIC STD EGP-1-1967
- Appropriate components are required to maintain these standards.

Construction

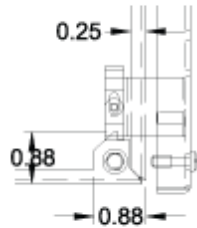
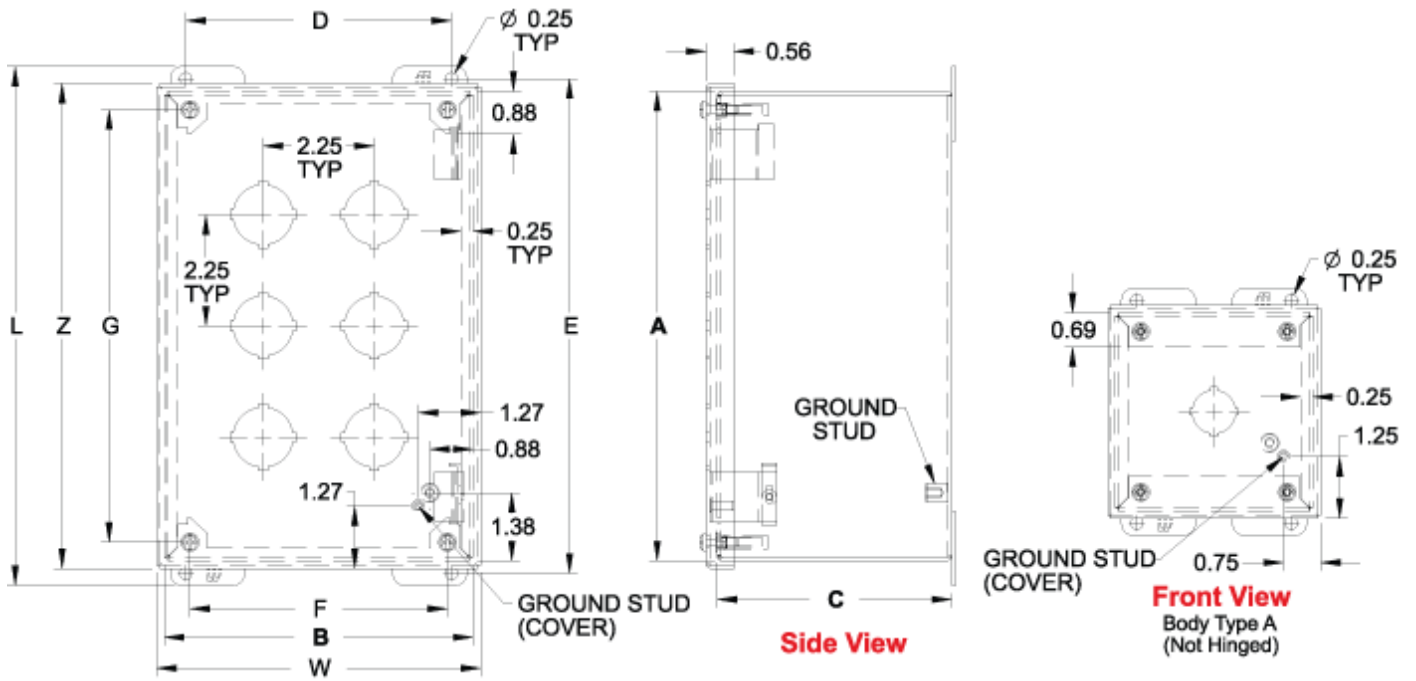
- Formed from 14 gauge steel except A which is 16 gauge.
- Smooth continuously welded seams.
- Welded brackets provide for enclosure mounting.
- Captive cover screws fasten into threaded, sealed wells.
- Larger enclosures provide internally hinged removable covers, designed to hold the cover open during wiring (see table).
- Oil resistant gasket and adhesive.
- A bonding stud is provided on the door and a grounding stud is provided on the enclosure.

Finish

- Cover and enclosure are phosphatized and finished in ANSI 61 gray powder coating.

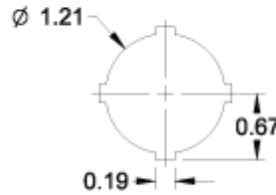
Accessories

- Hole Plugs
- Ground Wire Kits
- Pedestal and Base

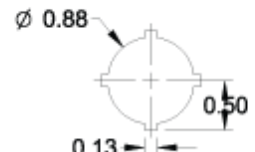


Hinge Detail

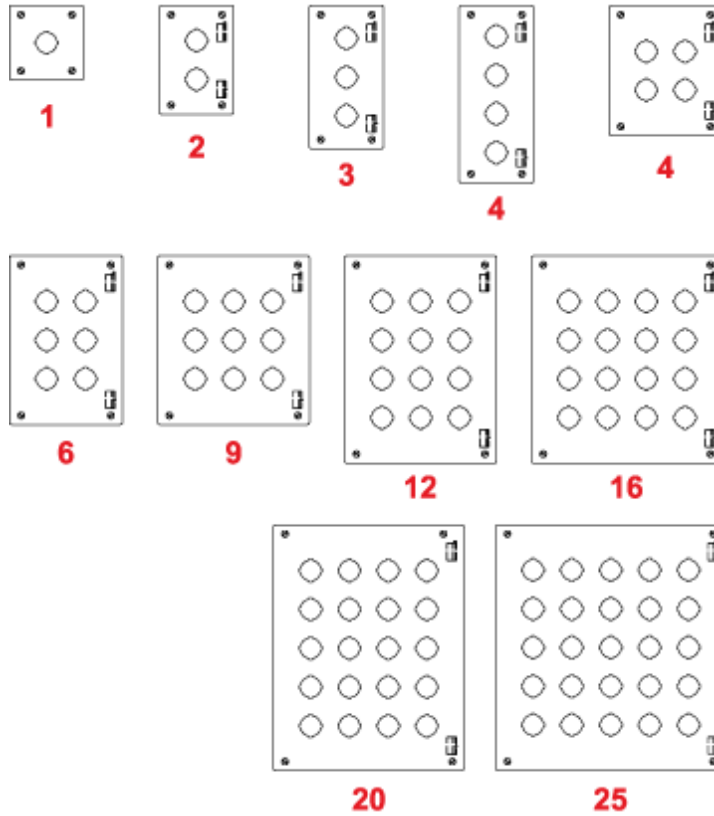
Retractable pin allows door to be mounted on left or right side



30.5mm Detail
(1437 Series)



22.5mm Detail
(1437M Series)



30.5mm	Part No.		No. Of Holes	Overall Dimensions							L	W	Z
	22.5mm			A	B	C	D	E	F	G			
1437A ¹	1437MA ¹		1	4.00	4.00	4.75	3.13	4.50	2.96	3.25	5.00	4.31	4.31
1437B	1437MB		2	6.00	4.00	4.75	3.13	6.50	2.96	5.25	7.00	4.31	6.31
1437C	1437MC		3	8.00	4.00	4.75	3.13	8.50	2.96	7.25	9.00	4.31	8.31
1437D	1437MD		4	10.00	4.00	4.75	3.13	10.50	2.96	9.25	11.00	4.31	10.31
1437F	1437MF		4	7.25	6.25	4.75	5.38	7.75	5.21	6.50	8.25	6.56	7.56
1437H	1437MH		6	9.50	6.25	4.75	5.38	10.00	5.21	8.75	10.50	6.56	9.81
1437K	1437MK		9	9.50	8.50	4.75	7.63	10.00	7.46	8.75	10.50	8.81	9.81
1437O	1437MO		12	11.75	8.50	4.75	7.63	12.25	7.46	11.00	12.75	8.81	12.06
1437S	1437MS		16	11.75	10.75	4.75	9.88	12.25	9.71	11.00	12.75	11.06	12.06
1437V	1437MV		20	14.00	10.75	4.75	9.88	14.50	9.71	13.25	15.00	11.06	14.31
1437X	1437MX		25	14.00	13.00	4.75	12.13	14.50	11.96	13.25	15.00	13.31	14.31

¹ Not hinged

Data subject to change without notice

© 2018. Hammond Manufacturing Ltd. All rights reserved.